

Run

```

In[*]:= res = 800;
SetDirectory[
  "C:\\drorbn\\Album\\2025.09.27_On_the_Trans_Canada_Trail_between_Coopers_Falls_and
    _Gravenhurst"];
fs = FileNames["*.gpx"]
data = DeleteCases[
  Union@Table["Geometry" /. Import[f, "Data"], {f, fs}],
  GeoPosition[[_ , None]], ∞
];
map0 = GeoGraphics[{Red, data}, GeoScaleBar → "Kilometers", ImageSize → res];
AllTracks = Get["../Summaries/AllTracks.m"];

Out[*]=
{2025-09-27_2603259269_On the Trans
  Canada Trail between Coopers Falls and Gravenhurst.gpx}

» C:\drorbn\Album\Summaries

GeoPosition: GeoPosition[{{53.2316, 7.46333}, None}] is not a valid position specification.
In ..\2020.02.01_Groningen_to_Leer_Ride\PathInTimeline.gpx
removed GeoPosition[{{53.2316, 7.46333}, None}].

GeoPosition: GeoPosition[{{43.8711, -78.7311}, None}] is not a valid position specification.
In ..\2020.06.06_Darlington_Pickering_Toronto_Reverse_Ride\PathInTimeline.gpx
removed GeoPosition[{{43.8711, -78.7311}, None}].

GeoPosition: GeoPosition[{{43.6591, -79.4025}, None}] is not a valid position specification.

General: Further output of GeoPosition::invpos will be suppressed during this calculation.
In ..\2020.06.13_Sunnybrook_Park_Ride\PathInTimeline.gpx
removed GeoPosition[{{43.6591, -79.4025}, None}].
In ..\2020.06.20_Penetanguishene-Tiny_Ride\PathInTimeline.gpx
removed GeoPosition[{{44.7738, -79.9389}, None}].
In ..\2020.06.28_Eugenia_Collingwood_Ride\PathInTimeline.gpx
removed GeoPosition[{{44.3142, -80.5197}, None}].
In ..\2020.07.04_Bruce_Hike_1-Niagara_to_Welland\PathInTimeline.gpx
removed GeoPosition[{{43.1588, -79.0515}, None}].
In ..\2020.07.25_Collingwood-Tiny_Ride\PathFromTimeline.gpx
removed GeoPosition[{{44.4952, -80.2203}, None}].
In ..\2020.08.01_Bruce_Hike_3-Lake_Moodie_to_Swayze_Falls\PathFromTimeline.gpx
removed GeoPosition[{{43.1075, -79.2492}, None}].
In ..\2020.08.08_Kinmount_Haliburton_Return_Ride\PathFromTimeline.gpx
removed GeoPosition[{{44.7816, -78.6525}, None}].
In ..\2022.05.07_Hike_Around_Nataf\Route_2022-05-07.gpx
removed GeoPosition[{{31.8317, 35.0661}, None}].

» C:\drorbn\Album\2025.09.27_On_the_Trans_Canada_Trail_between_Coopers_Falls_and_Gravenhurst

```

```
In[ ]:= Rasterize[
  map = GeoGraphics[{Thickness[0.0008], Blue, AllTracks, Thickness[0.0024], Red, data},
    GeoScaleBar → "Kilometers",
    ImageSize → res,
    GeoRange → (GeoRange /. Options[map0])
  ],
  RasterSize → res
]
Export["Path%.png", map];
```

Out[]:=



```
In[ ]:= map3D = Echo@ResourceFunction["GeoElevationGraphics3D"] [
  {Thick, Blue, AllTracks, Red, data},
  GeoGridRangePadding → 0,
  GeoScaleBar → "Kilometers",
  ImageSize → res,
  GeoRange → (GeoRange /. Options[map0])
];
Export["Path3D.png", map3D]
```

Out[]:=

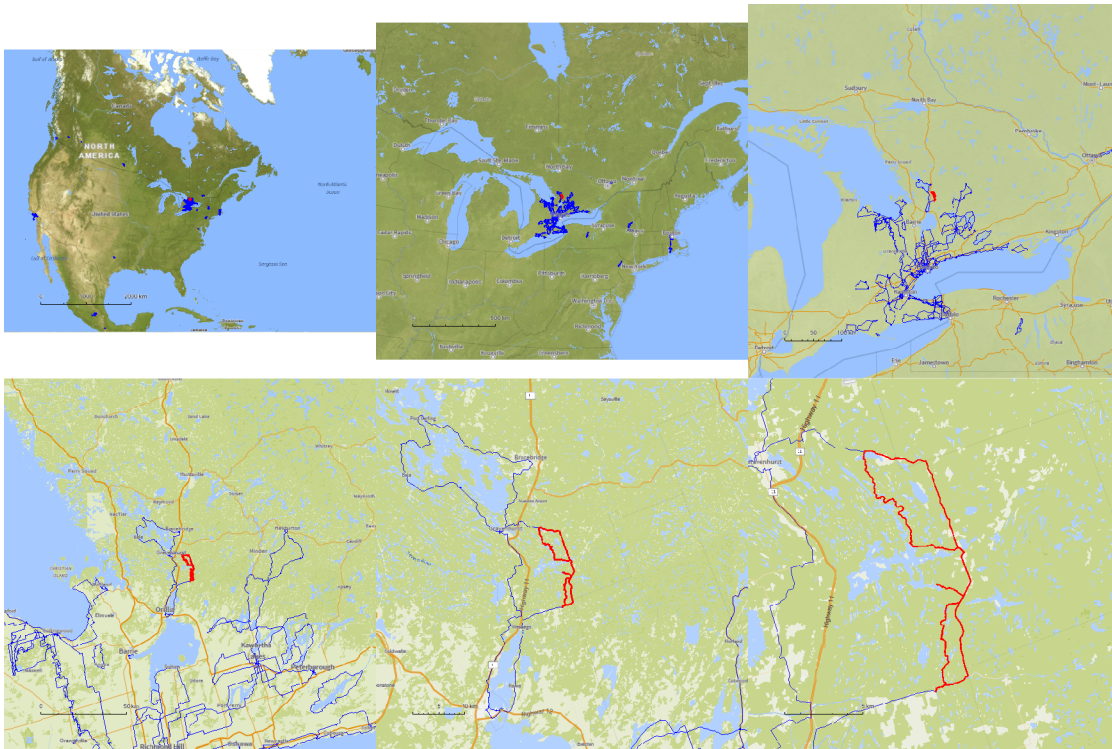
Path3D.png

```

In[ ]:= PathsLocation = Module[{R = 3000, r = 12, n = 6, res = 600},
  ImageAssemble[
    Partition[#, 3] &@Table[
      Rasterize[
        GeoGraphics[
          {Blue, Thickness[(2 n - k) / 4000], AllTracks, Red, Thickness[(2 n - k) / 1500], data},
          GeoCenter → Mean@Cases[data, GeoPosition[L_List] :> Mean[L], ∞],
          GeoRange → Quantity[R (r / R)^(k-1) / (n-1), "Kilometers"],
          GeoScaleBar → "Kilometers",
          ImageSize → res
        ],
        RasterSize → res
      ],
      {k, n}],
    "Fit", Background → White]
  ]
Export["PathLocation.png", PathsLocation]
ResetDirectory[]

```

Out[]=



Out[]=

PathLocation.png

Out[]=

C:\Users\drorb

Image Directory

```

folder =
  "C:\\drorbn\\Album\\2025.09.27_On_the_Trans_Canada_Trail_between_Coopers_Falls_and
    _Gravenhurst";
SetDirectory[folder];
If[Head[PensieveDirectives] === List,
  ImageComments = "ImageComments" /. PensieveDirectives, ImageComments = {}];
(Interpretation[ImageResize[Import@#, 400], #] → (# /. ImageComments /. (# → ""))) & /@
FileNames["*.jpg" | "*.jpeg" | "*.png" | "*.mp4"]
ResetDirectory[]

```

Out[*]=

C:\drorbn\AcademicPensieve\Projects\Theta

Export

Just 51.1km, yet one of my hardest rides. I wanted to re-do a certain 9km bush part of the Trans Canada Trail, that I first did [./2024.09.14_Orillia_to_Gravenhurst_Return_Ride/index.html](https://drorbn.net/2024.09.14_Orillia_to_Gravenhurst_Return_Ride/index.html) almost exactly a year ago. Back then I was riding [./Equipment/Marin/index.html](https://drorbn.net/Equipment/Marin/index.html) Marin, my regular bike, and this time I would ride [./Equipment/Kona/index.html](https://drorbn.net/Equipment/Kona/index.html) Kona, my fat-tire bike. So it would be much much easier, I thought. I was wrong! It turns out that the difficulty is intrinsic, not related to the bike I am riding...

But I was so sure that it would be easier that I prepended another bush part of the <https://tctrail.ca/TCT>, the 7.3km <https://www.gravenhurst.ca/tourism-culture-recreation/parks-and-trails/cooper-s-falls-trail> Cooper's Falls Trail, which turned out to be even harder.

So by the time I got out of the bush at km30 or so, I was exhausted. My original plan was to then add another 60km of a plain bike ride, or else it would be too easy (I thought). Instead I headed right back to my car on the shortest route possible, a mere 21km.

```
{
  "TitleNotes" →
    "Just 51.1km, yet one of my hardest rides. I wanted to re-do a certain 9km
    bush part of the Trans Canada Trail that I first did <a
    href=../2024.09.14_Orillia_to_Gravenhurst_Return_Ride/index.html>almost
    exactly a year ago</a>. Back then I was riding <a
    href=../Equipment/Marin/index.html>Marin</a>, my regular bike, and this time
    I would ride <a href=../Equipment/Kona/index.html>Kona</a>, my fat-tire
    bike. So it would be much much easier, I thought. I was wrong! It turns out
    that the difficulty was intrinsic, not related to the bike I was riding...
    <p>But I was so sure that it would be easier that I prepended another bush part of the
    <a class=external href=https://tctrail.ca/>TCT</a>, the 7.3km <a class=external
    href=https://www.gravenhurst.ca/tourism-culture-recreation/parks-and-trails/
    cooper-s-falls-trail/>Cooper's Falls Trail</a>,
    which turned out to be even harder.
    <p>So by the time I got out of the bush at km30 or so, I was
    exhausted. My original plan was to then add another 60km of a plain
    bike ride, or else it would be too easy (I thought). Instead I headed
    right back to my car on the shortest route possible, a mere 21km.",
    "ImageComments" → {}
}
```

Out[⌘]=

```
{TitleNotes → , ImageComments → {}}
```