

```

In[*]:= folder =
  "C:\\drorbn\\Album\\2024.11.09-10_Bruce_Hikes_37-38-_The_Beaver_River_Valley_(
    Heading_South)";
SetDirectory[folder];

nbd = Select[FileNames["*", "C:\\drorbn\\Album"], FileType[#] == Directory &];
len = Length[nbd]
loc = Position[nbd, folder][[1, 1]];
DeleteFile[nbd[[Mod[#, len, 1]] <> "\\index.html"] & /@ (loc + {1, -1})];

fs = Echo@Take[FileNames["*.gpx"], All];
data = Union@Table["Geometry" /. Import[f, "Data"], {f, fs}];
path = Echo@GeoGraphics[{Red, data},
  GeoGridRangePadding -> Scaled[0.1],
  GeoScaleBar -> "Kilometers"
];
Export["Path%.png", path]

path3D = Echo@ResourceFunction["GeoElevationGraphics3D"][{Red, data},
  GeoGridRangePadding -> 0,
  GeoScaleBar -> "Kilometers",
  ViewPoint -> {0.03392552524370772`, -1.9374148986729356`, 2.774035430404068`},
  ViewVertical -> {-0.014353130476599685`, 0.8196768842397942`, 0.5726463071464487`}
];
Export["Path3D.png", path3D]

PathLocation = Module[{R = 3000, r = 10, n = 6, res = 600},
  ImageAssemble[
    Partition[#, 3] &@Table[
      Rasterize[
        GeoGraphics[{Red, Thick, data},
          GeoCenter -> Mean@Cases[data, GeoPosition[L_List] :-> Mean[L], ∞],
          GeoRange -> Quantity[R (r / R)^(k-1)/(n-1), "Kilometers"],
          GeoScaleBar -> "Kilometers",
          ImageSize -> res
        ],
      RasterSize -> res
    ],
    {k, n}],
  "Fit", Background -> White]
]
Export["PathLocation.png", PathLocation]

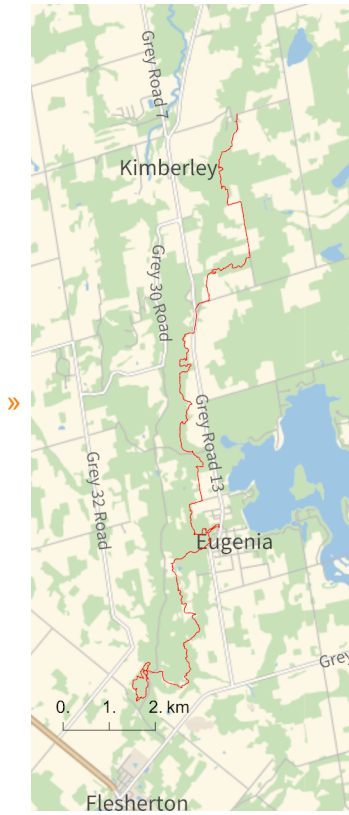
ResetDirectory[]

```

Out[]=

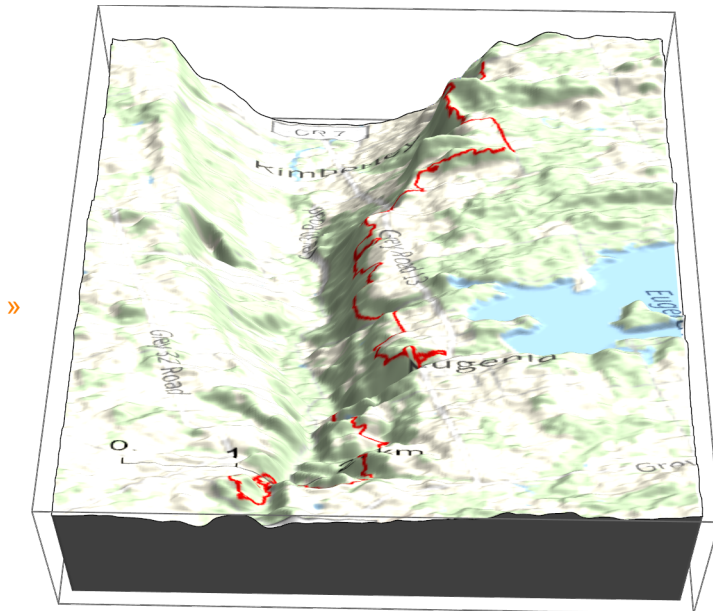
327

- » {2024-11-09_1950853610_2024.11.09_Bruce_Hikes_37-_The_Beaver_River_Valley_(Heading_South) .gpx, 2024-11-10_1952595284_2024.11.10_Bruce_Hikes_38-_The_Beaver_River_Valley_(Heading_South) .gpx}



Out[]=

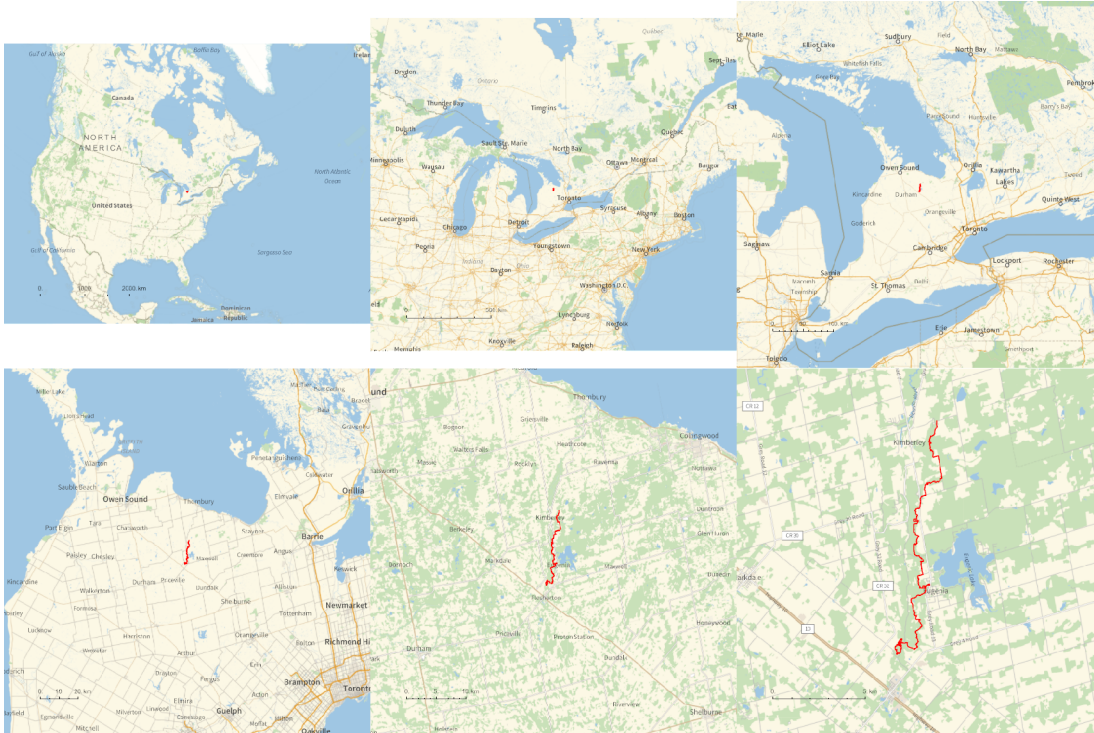
Path%.png



Out[]=

Path3D.png

Out[]=



Out[]=

PathLocation.png

Out[]=

C:\Users\drorb

folder =

"C:\\drorbn\\Album\\2024.11.09-10_Bruce_Hikes_37-38-_The_Beaver_River_Valley_(Heading_South)";

SetDirectory[folder];

(Interpretation[ImageResize[Import@#, 400], #] -> "") & /@

FileNames["*.jpg" | "*.jpeg" | "*.png" | "*.mp4"]

My Bruce hikes are getting farther from Toronto so I've decided to have the occasional \"double feature\", with a sleepover in between in the north. That's the first! Yet there will be like it more often as I get further north.

<p>With Olga, using two cars for the returns. 11.7km on sunny day 1 and 13.1km on rainy day 2 (rain in Canada is exactly the same as rain in the Netherlands - it gets you wet).

<p>By the time we were back to the little dirt road where we left Olga's car, it was already too muddy, and we had to wait an hour and a half for the tow truck to come.

<p>The first 6 pictures are from the in-between evening, in Collingwood.

```
{
  "TitleNotes" →
    "My Bruce hikes are getting farther from Toronto so I've decided to have the
    occasional \"double feature\", with a sleepover in between in the north.
    That's the first! Yet there will be like it more often as I get further north.
    <p>With Olga, using two cars for the returns. 11.7km on sunny day 1
    and 13.1km on rainy day 2 (rain in Canada is exactly the same as <a
    href=../2023.12.09_A_Walk_Around_Zuidlaardermeer/index.html>rain
    in the Netherlands</a> - it gets you wet).
    <p>By the time we were back to the little dirt
    road where we left Olga's car, it was already too muddy, and
    we had to wait an hour and a half for the tow truck to come.
    <p>The first 6 pictures are from the in-between evening, in Collingwood.",
  "ImageComments" → {}
}
```