

```

In[*]:= folder = "C:\\drorbn\\Album\\2024.10.12_Milton,_Guelph,_Lake_Valens_Ride";
SetDirectory[folder];

nbd = Select[FileNames["*", "C:\\drorbn\\Album"], FileType[#] == Directory &];
len = Length[nbd]
loc = Position[nbd, folder][[1, 1]];
DeleteFile[nbd[[Mod[# , len, 1]] <> "\\index.html"] & /@ (loc + {1, -1})];

fs = Echo@Take[FileNames["*.gpx"], All];
data = Union@Table["Geometry" /. Import[f, "Data"], {f, fs}];
path = Echo@GeoGraphics[{Red, data},
  GeoGridRangePadding -> Scaled[0.1],
  GeoScaleBar -> "Kilometers"
];
Export["Path%.png", path]

path3D = Echo@ResourceFunction["GeoElevationGraphics3D"][{Red, data},
  GeoGridRangePadding -> 0,
  GeoScaleBar -> "Kilometers",
  ViewPoint -> {0.03392552524370772`, -1.9374148986729356`, 2.774035430404068`},
  ViewVertical -> {-0.014353130476599685`, 0.8196768842397942`, 0.5726463071464487`}
];
Export["Path3D%.png", path3D]

PathLocation = Module[{R = 3000, r = 40, n = 6, res = 600},
  ImageAssemble[
    Partition[#, 3] &@Table[
      Rasterize[
        GeoGraphics[{Red, Thick, data},
          GeoCenter -> Mean@Cases[data, GeoPosition[L_List] :> Mean[L], ∞],
          GeoRange -> Quantity[R (r / R)^(k-1) / (n-1), "Kilometers"],
          GeoScaleBar -> "Kilometers",
          ImageSize -> res
        ],
        RasterSize -> res
      ],
      {k, n}],
    "Fit", Background -> White]
  ]
Export["PathLocation.png", PathLocation]

ResetDirectory[]

```

Out[\*]=

322

» {2024-10-12\_1908702195\_Milton, Guelph, Lake Valens Ride.gpx}



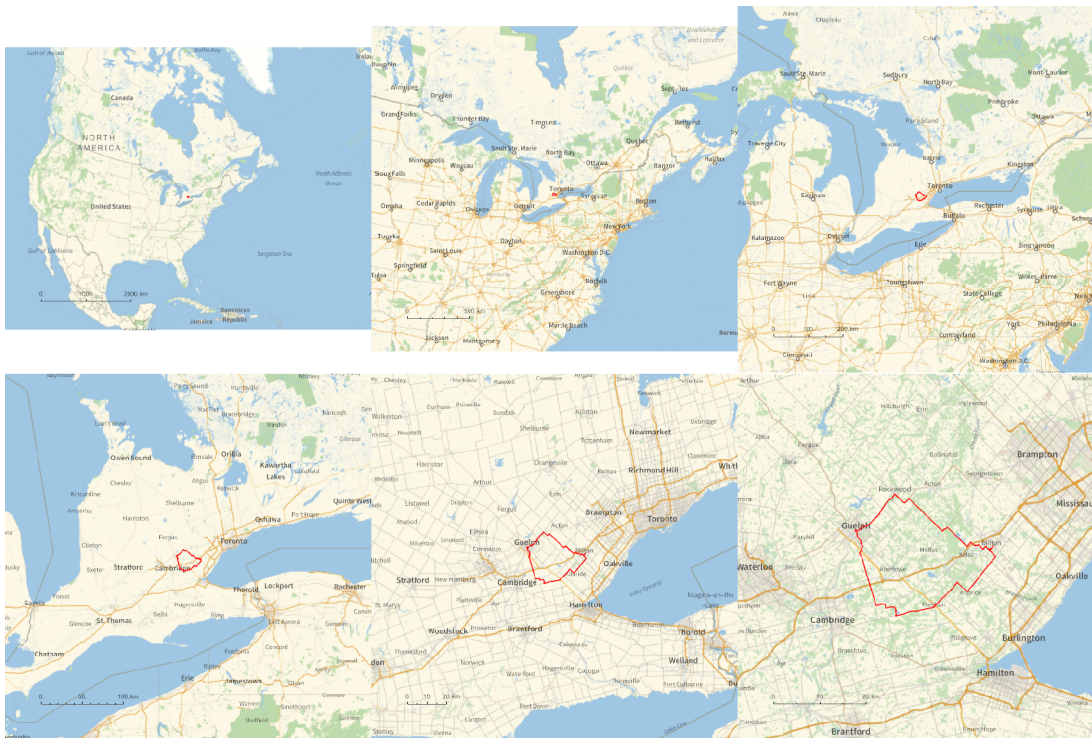
Out[ ]=

Path%.png

Out[ ]=

Path3D%.png

Out[ ]=



Out[ ]=

PathLocation.png

Out[ ]=

C:\Users\drorb

```
folder = "C:\\drorbn\\Album\\2024.09.14_Orillia_to_Gravenhurst_Return_Ride";  
SetDirectory[folder];  
(Interpretation[ImageResize[Import@#, 400], #] → "") & /@  
FileNames["*.jpg" | "*.jpeg" | "*.png" | "*.mp4"]
```

A 101km ride on a very nice day.

```
{  
  "TitleNotes" → "A 101km ride on a very nice day.",  
  "ImageComments" → {}  
}
```