

```

In[*]:= folder = "C:\\drorbn\\Album\\2024.04.08_Burlington,_Bronte,_Sun,_Moon";
SetDirectory[folder];

nbd = Select[FileNames["*", "C:\\drorbn\\Album"], FileType[#] == Directory &];
len = Length[nbd]
loc = Position[nbd, folder][[1, 1]];
DeleteFile[nbd[[Mod[#, len, 1]] <> "\\index.html"] & /@ (loc + {1, -1})];

fs = Echo@Take[FileNames[{"*.gpx", "*.kml"}], All];
data = Union@Table["Geometry" /. Import[f, "Data"], {f, fs}];
path = Echo@GeoGraphics[{Red, data},
  GeoGridRangePadding -> Scaled[0.1],
  GeoScaleBar -> "Kilometers"
];
Export["Path%.png", path]

path3D = Echo@ResourceFunction["GeoElevationGraphics3D"][{Red, data},
  GeoGridRangePadding -> 0,
  GeoScaleBar -> "Kilometers"
];
Export["Path3D%.png", path3D]

PathLocation = Module[{R = 3000, r = 15, n = 6, res = 600},
  ImageAssemble[
    Partition[#, 3] &@Table[
      Rasterize[
        GeoGraphics[{Red, Thick, data},
          GeoCenter -> Mean@Cases[data, GeoPosition[l_List] :> Mean[l], ∞],
          GeoRange -> Quantity[R (r / R)^(k-1)/(n-1), "Kilometers"],
          GeoScaleBar -> "Kilometers",
          ImageSize -> res
        ],
      RasterSize -> res
    ],
    {k, n}],
  "Fit", Background -> White]
]
Export["PathLocation.png", PathLocation]

ResetDirectory[]

```

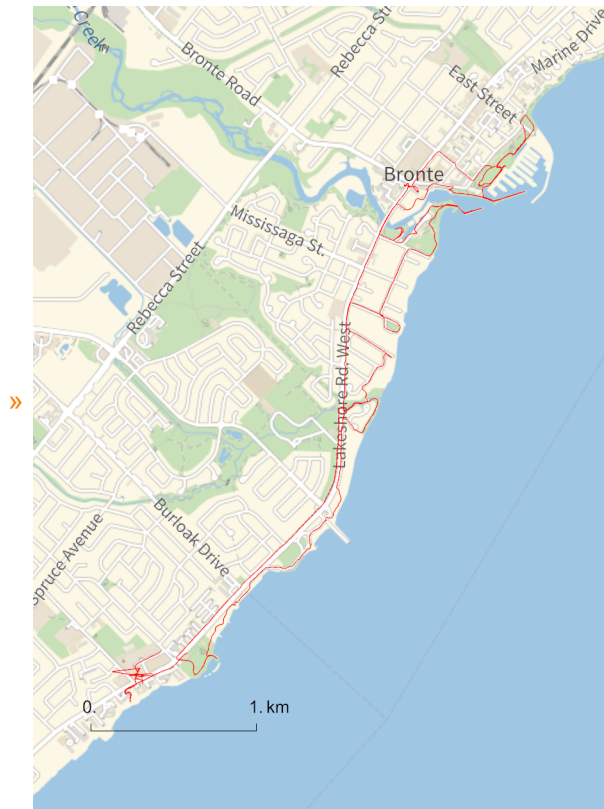
Out[*]=

285

 DeleteFile: Directory or file "C:\drorbn\Album\2024_Greater_Toronto_Stay_in_Place\index.html" not found.

 DeleteFile: Directory or file "C:\drorbn\Album\2024.04.06_Mimico_Creek_Walk\index.html" not found.

» {2024-04-08_1504103874_2024.04.08 Burlington, Bronte, Sun, Moon.gpx}



Out[*]=

Path%.png

Union: Heads List and GIS'DisjointBoxes at positions 2 and 1 are expected to be the same.

Part: The expression

```
Union[GIS'DisjointBoxes[{{{{-692815., 419472.}, {-692743., 419509.}}, {{-692898., 419050.}, {-692850., 419128.}}, {{-692661., 419324.}, {-692625., 419361.}}}], Join[{}], {}]
```

Part: The expression

```
Union[GIS'DisjointBoxes[{{{{-692815., 419472.}, {-692743., 419509.}}, {{-692898., 419050.}, {-692850., 419128.}}, {{-692661., 419324.}, {-692625., 419361.}}}], Join[{}], {}]
```

Part: The expression

```
Union[GIS'DisjointBoxes[{{{{-692815., 419472.}, {-692743., 419509.}}, {{-692898., 419050.}, {-692850., 419128.}}, {{-692661., 419324.}, {-692625., 419361.}}}], Join[{}], {}]
```

General: Further output of Part::pkspec1 will be suppressed during this calculation.

Union: Heads List and GIS'DisjointBoxSets at positions 2 and 1 are expected to be the same.

Extract: Position specification <<1>> in

```
Extract[{{System`GeoGraphicsDump`GeoLabelLineBox[250][<<1>>, System`GeoGraphicsDump`GeoLabelDataBox[GraphicsGroup[{{Text[<<6>>, {<<2>>}, {<<2>>}, {<<2>>}], Text[<<6>>, {<<2>>}, {<<2>>}, {<<2>>}], Text[<<6>>, {<<2>>}, {<<2>>}, {<<2>>}], Text[<<6>>, {<<2>>}, {<<2>>}, {<<2>>}], <<4>>, Text[<<6>>, {<<2>>}, {<<2>>}, {<<2>>}], Text[<<6>>, {<<2>>}, {<<2>>}, {<<2>>}], <<1>>], <<11>>[<<1>>]]], <<1>>, <<1>>]
```

☺ Extract: Position specification <<1>> in

Extract[{{GIS`LineBoxSet[250][GIS`BoxJoin[{{GIS`RotatedBox[{{<<2>>, {{<2>>}}, 0.621018, {-692648., 419313.}}, GIS`RotatedBox[{{<<2>>, {{<2>>}}, 0.676645, {-692644., 419316.}}, <<8>>, <<1>>]], GIS`BoxJoin[{{<1>>]], GIS`LineBoxSet[250][GIS`BoxJoin[{{<1>>]], <<3>>]], <<1>>] is not applicable.

☺ Extract: Position specification <<1>> in

Extract[{{GIS`LineBoxSet[250.][GIS`BoxJoin[{{GIS`RotatedBox[{{<<2>>, {{<2>>}}, 0.621018, {-692648., 419313.}}, GIS`RotatedBox[{{<<2>>, {{<2>>}}, 0.676645, {-692644., 419316.}}, <<8>>, <<1>>]], GIS`BoxJoin[{{<1>>]], GIS`LineBoxSet[250.][<<1>>]], Union[{{<1>>, {}]] is not applicable.

☺ General: Further output of Extract::ps1 will be suppressed during this calculation.

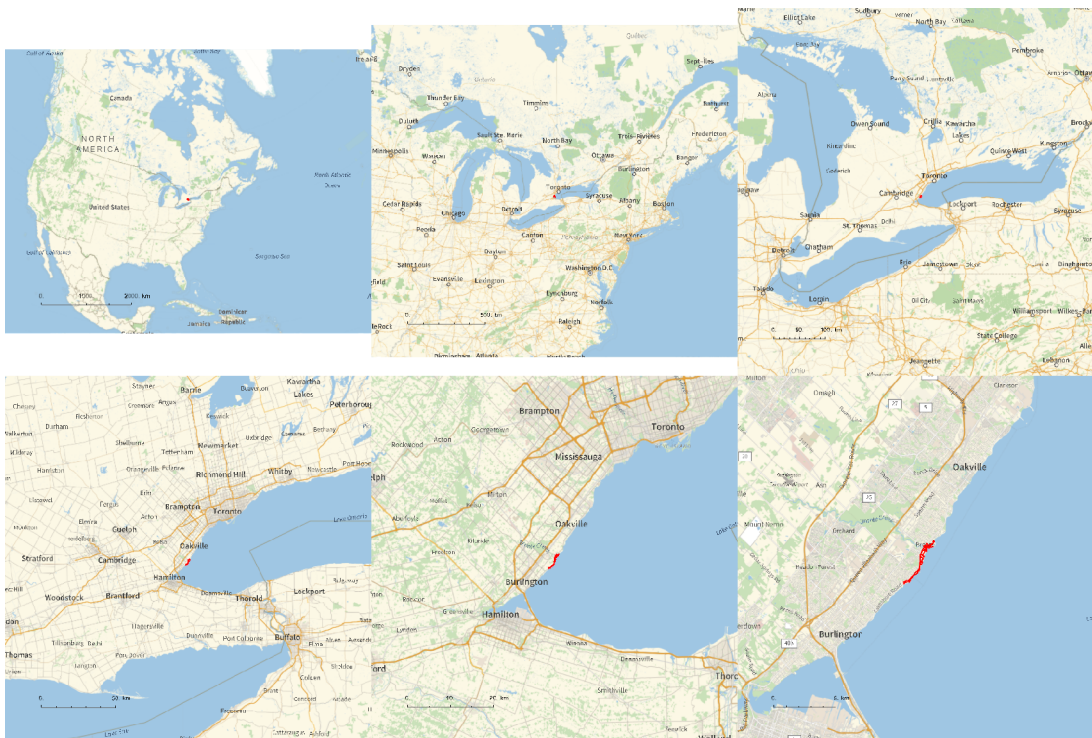
☺ Union: Heads List and GIS`DisjointBoxSets at positions 2 and 1 are expected to be the same.

☺ General: Further output of Union::heads will be suppressed during this calculation.

Out[]=

Path3D%.png

Out[]=



Out[]=

PathLocation.png

Out[]=

C:\Users\drorb\OneDrive\Documents



Out[]=

Path3D%.png

```

folder = "C:\\drorbn\\Album\\2024.04.08_Burlington,_Bronte,_Sun,_Moon";
SetDirectory[folder];
(Interpretation[ImageResize[Import@#, 400], #] → "") & /@
FileNames["*.jpg" | "*.jpeg" | "*.png" | "*.mp4"]

```

Itai and I decided to watch the eclipse, and for totality we had to go about an hour away from the city. But traffic jams were expected, and parking troubles, so we left 6 hours early and had time for a 16.7km xootr ride along the very nice Burlington-Bronte shoreline. As we went we could see more and more people coming, and the traffic building up. By the time we were back to the little park where we started, it was crowded. We did well to start early!

<p>It was darker than the totality video shows - cameras compensate for the dark a bit too much. Yet it wasn't fully dark: we were just a few kilometers from the edge of totality, and when looking to the distance we could see what seemed like twilight.

```

{
  "TitleNotes" →
    "Itai and I decided to watch the eclipse, and for totality we had to go about an
    hour away from the city. But traffic jams were expected, and parking troubles,
    so we left 6 hours early and had time for a 16.7km xootr ride along the very
    nice Burlington-Bronte shoreline. As we went we could see more and more
    people coming, and the traffic building up. By the time we were back to the
    little park where we started, it was crowded. We did well to start early!

    <p>It was darker than the totality video shows - cameras
    compensate for the dark a bit too much. Yet it wasn't fully dark:
    we were just a few kilometers from the edge of totality, and when
    looking to the distance we could see what seemed like twilight.",
  "ImageComments" → {}
}

```