

```

In[*]:= folder = "C:\\drorbn\\Album\\2024.02.04_Along_the_Los_Angeles_Seashore";
SetDirectory[folder];

nbd = Select[FileNames["*", "C:\\drorbn\\Album"], FileType[#] == Directory &];
len = Length[nbd]
loc = Position[nbd, folder][[1, 1]];
DeleteFile[nbd[[Mod[#, len, 1]] <> "\\index.html"] & /@ (loc + {1, -1})];

fs = Echo@Take[FileNames["*.gpx"], All];
data = Union@Table["Geometry" /. Import[f, "Data"], {f, fs}];
path = Echo@GeoGraphics[{Red, data},
  GeoGridRangePadding -> Scaled[0.1],
  GeoScaleBar -> "Kilometers"
];
Export["Path%.png", path]

PathLocation = Module[{R = 3000, r = 10, n = 6, res = 600},
  ImageAssemble[
    Partition[#, 3] &@Table[
      Rasterize[
        GeoGraphics[{Red, Thick, data},
          GeoCenter -> Mean@Cases[data, GeoPosition[l_List] :> Mean[l], ∞],
          GeoRange -> Quantity[R (r / R)(k-1) / (n-1), "Kilometers"],
          GeoScaleBar -> "Kilometers",
          ImageSize -> res
        ],
      RasterSize -> res
    ],
    {k, n}],
  "Fit", Background -> White]
]
Export["PathLocation.png", PathLocation]

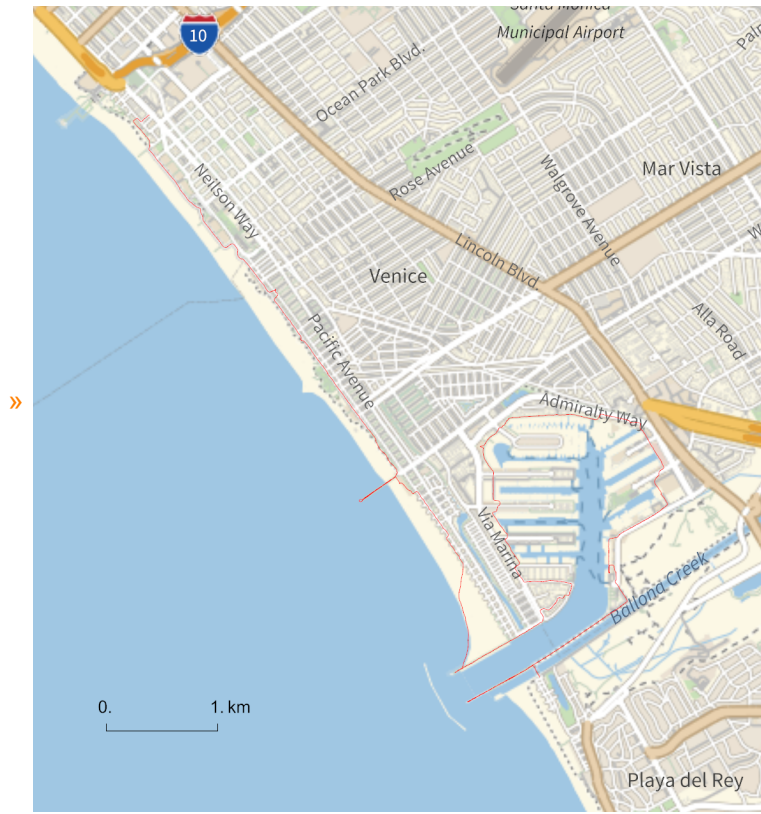
ResetDirectory[]

```

Out[\*]=

271

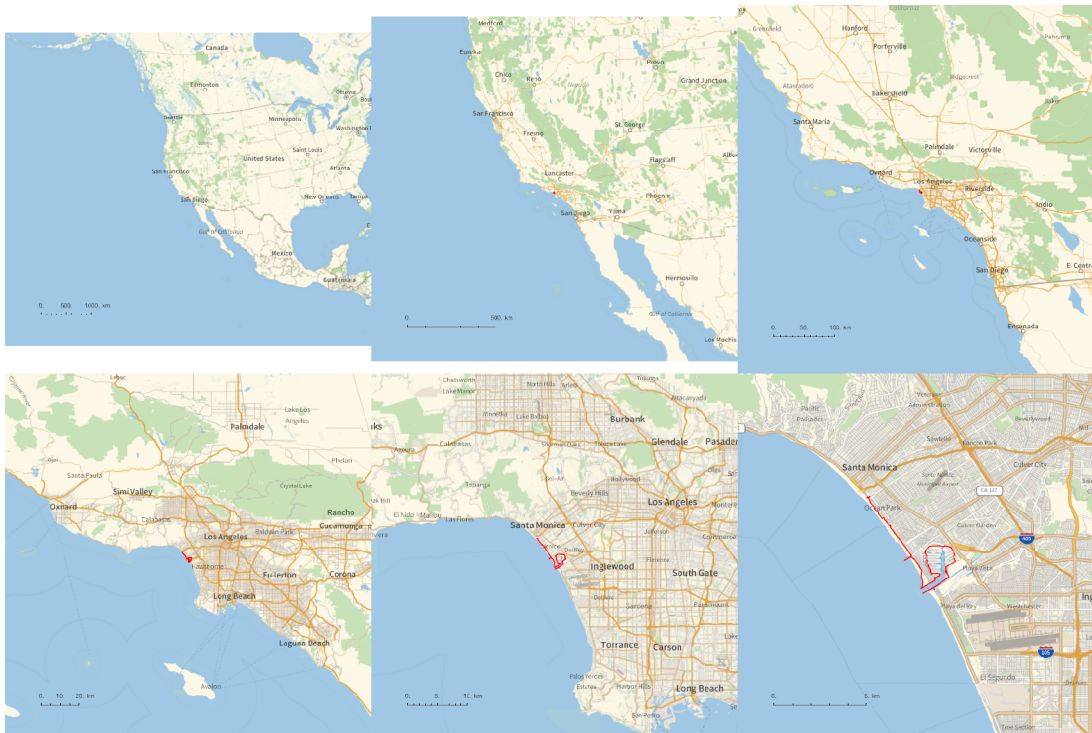
» {2024-02-04\_1432060356\_Along the Los Angeles Seashore.gpx}



Out[ ]=

Path%.png

Out[ ]=



Out[*n*]=

PathLocation.png

Out[*n*]=

C:\Users\drorb\Documents

```
folder = "C:\\drorbn\\Album\\2024.02.04_Along_the_Los_Angeles_Seashore";  
SetDirectory[folder];  
(Interpretation[ImageResize[Import@#, 400], #] → "") & /@  
FileNames["*.jpg" | "*.jpeg" | "*.png" | "*.mp4"]
```

About 17.5km, with Itai. Rainy towards the end!

```
{  
  "TitleNotes" → "About 17.5km, with Itai. Rainy towards the end!",  
  "ImageComments" → {}  
}
```