

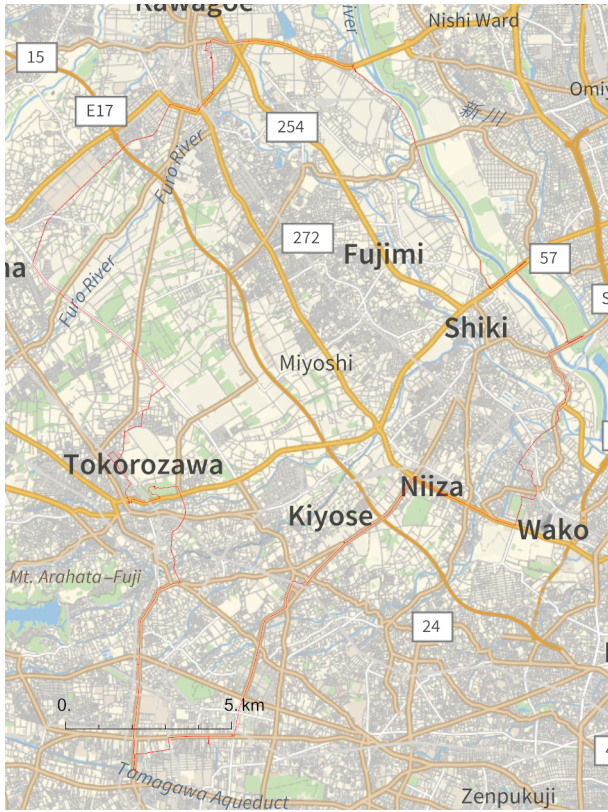
```
In[*]:= Length[DeleteFile /@ FileNames["index.html", "C:\\drorbn\\AcademicPensieve\\Album", 2]]
```

```
Out[*]=
```

```
228
```

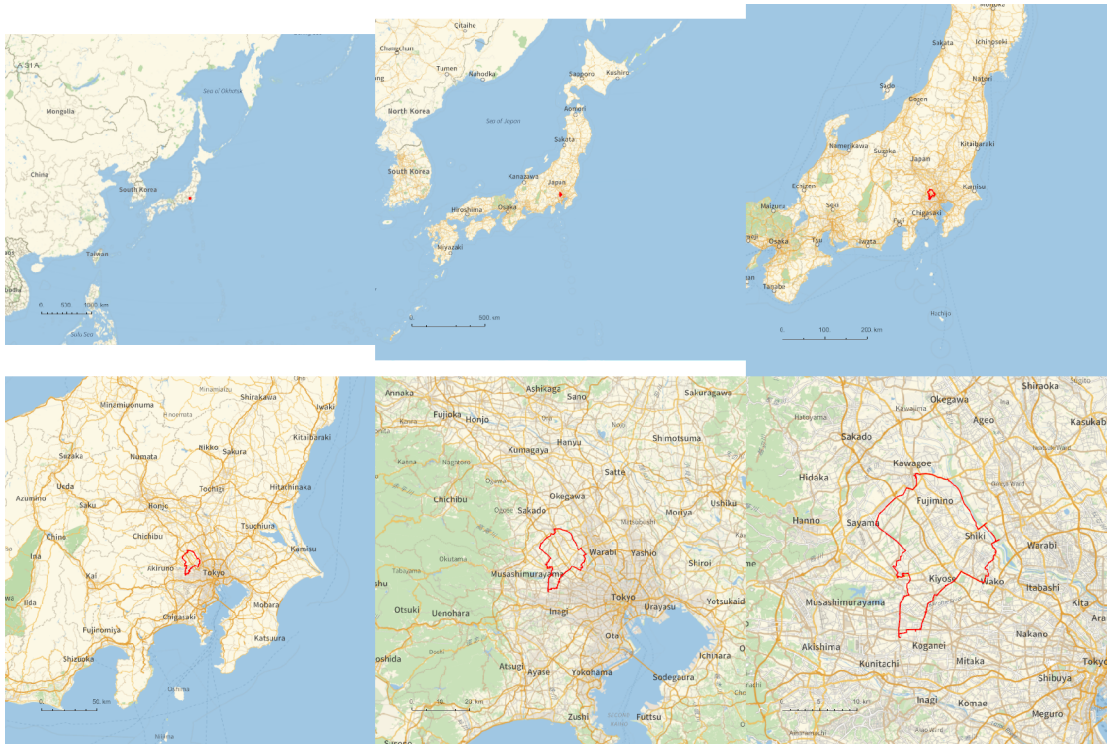
```
In[*]:= folder = "C:\\drorbn\\AcademicPensieve\\Album\\2023.07.01_Arakawa_River_Ride";
SetDirectory[folder];
fs = Echo@FileNames["*.gpx"];
data = Union@Table["Geometry" /. Import[f, "Data"], {f, fs}];
path = Echo@GeoGraphics[{Red, data},
  GeoGridRangePadding → 0,
  GeoScaleBar → "Kilometers"
];
(*Export["path.png", path] *)
PathLocation = Module[{R = 3000, r = 25, n = 6, res = 600},
  ImageAssemble[
    Partition[#, 3] &@Table[
      Rasterize[
        GeoGraphics[{Red, Thick, data},
          GeoCenter → Mean@Cases[data, GeoPosition[l_List] :> Mean[l], ∞],
          GeoRange → Quantity[R (r / R)(k-1)/(n-1), "Kilometers"],
          GeoScaleBar → "Kilometers",
          ImageSize → res
        ],
      RasterSize → res
    ],
    {k, n}],
  "Fit", Background → White]
]
Export["PathLocation.png", PathLocation]
```

» {2023-07-01\_05-21\_Sat.gpx}



»

Out[ ] =



Out[*n*]=

PathLocation.png

```
folder = "C:\\drorbn\\AcademicPensieve\\Album\\2023.07.01_Arakawa_River_Ride";  
SetDirectory[folder];  
(Interpretation[ImageResize[Import@#, 400], #] → "") & /@  
FileNames["*.jpg" | "*.jpeg" | "*.png" | "*.mp4"]
```

82km on a rainy day (rain in Japan is exactly the same as rain in Canada - it gets you wet).

```
{  
  "TitleNotes" → "82km on a rainy day (rain in Japan  
    is exactly the same as rain in Canada - it gets you wet).",  
  "ImageComments" → {}  
}
```