

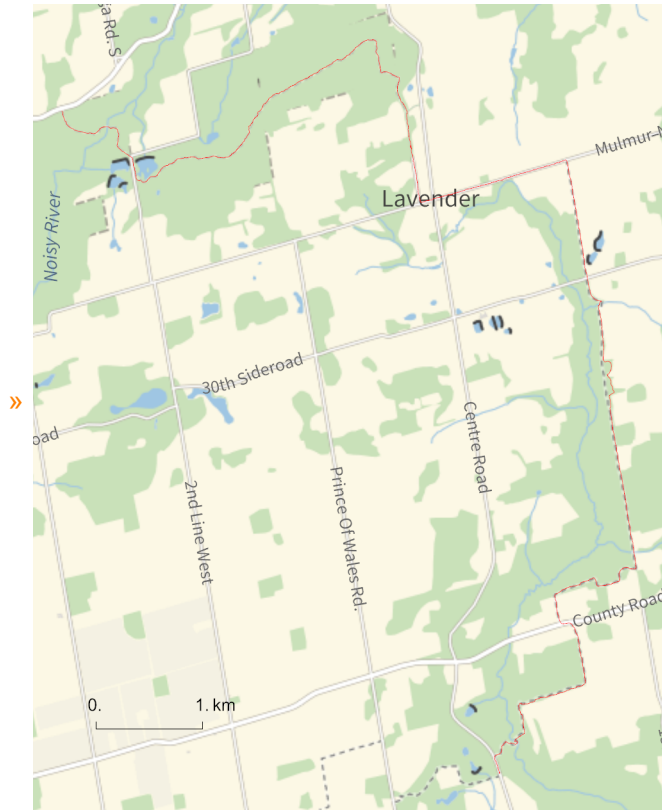
```

In[*]:= Length[DeleteFile /@ FileNames["index.html", "C:\\drorbn\\AcademicPensieve\\Album", 2]]
Out[*]=
222

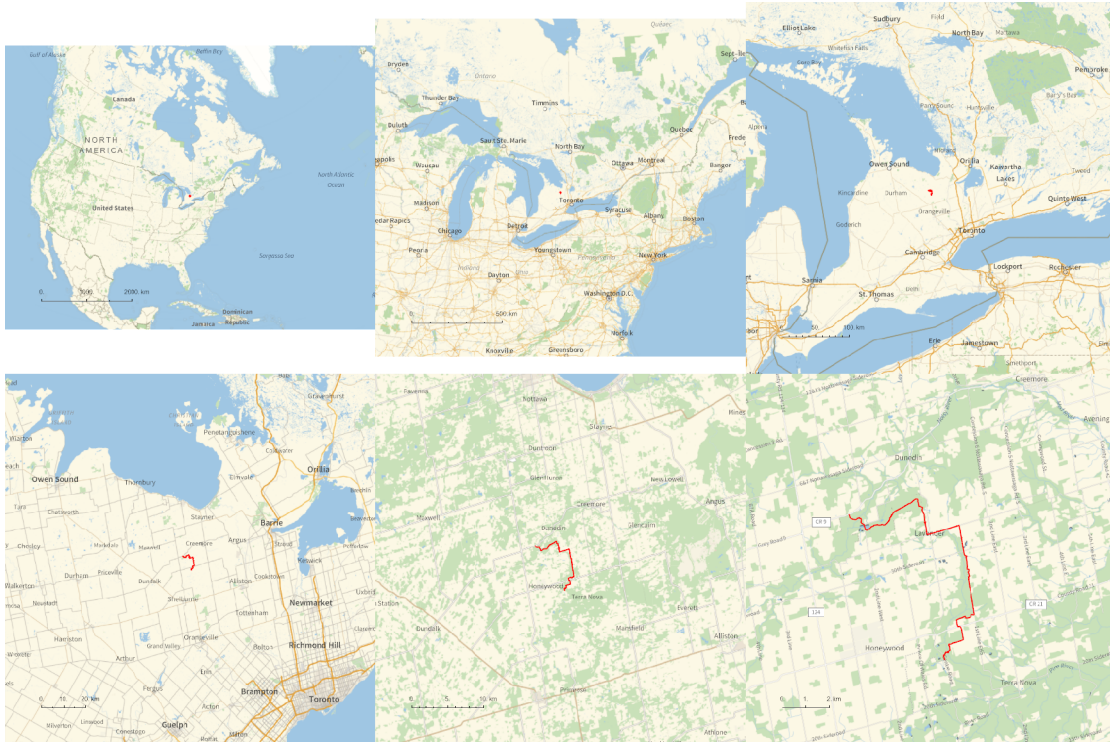
In[*]:= folder =
"C:\\drorbn\\AcademicPensieve\\Album\\2023.06.10_Bruce_Hike_29-_Lavender_and_Noisy
_River";
SetDirectory[folder];
fs = Echo@FileNames["*.gpx"];
data = Union@Table["Geometry" /. Import[f, "Data"], {f, fs}];
path = Echo@GeoGraphics[{Red, data},
  GeoGridRangePadding → 0,
  GeoScaleBar → "Kilometers"
];
(*Export["path.png", path] *)
PathLocation = Module[{R = 3000, r = 8, n = 6, res = 600},
  ImageAssemble[
    Partition[#, 3] &@Table[
      Rasterize[
        GeoGraphics[{Red, Thick, data},
          GeoCenter → Mean@Cases[data, GeoPosition[L_List] :> Mean[L], ∞],
          GeoRange → Quantity[R (r / R)(k-1)/(n-1), "Kilometers"],
          GeoScaleBar → "Kilometers",
          ImageSize → res
        ],
        RasterSize → res
      ],
      {k, n}],
    "Fit", Background → White]
  ]
Export["PathLocation.png", PathLocation]

```

» {2023-06-10_09-54_Sat.gpx}



Out[] =



Out[*n*]=

PathLocation.png

folder =

```
"C:\\drorbn\\AcademicPensieve\\Album\\2023.06.10_Bruce_Hike_29-_Lavender_and_Noisy_River";
```

SetDirectory[folder];

```
(Interpretation[ImageResize[Import@#, 400], #] → "") & /@
```

```
FileNames["*.jpg" | "*.jpeg" | "*.png" | "*.mp4"]
```

About 15.5km hiking plus another 14.3km return by bike, on a nice day. Though for the first time on the Bruce Trail, I was bugged by bugs.

```
{
  "TitleNotes" →
  "About 15.5km hiking plus another 14.3km return by bike, on a nice day.
  Though for the first time on the Bruce Trail, I was bugged by bugs.",
  "ImageComments" → {}
}
```