

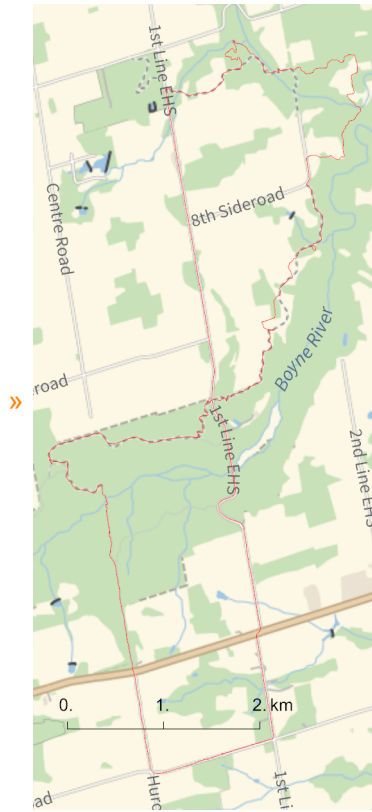
```
In[*]:= Length[DeleteFile /@ FileNames["index.html", "C:\\drorbn\\AcademicPensieve\\Album", 2]]
```

```
Out[*]=
```

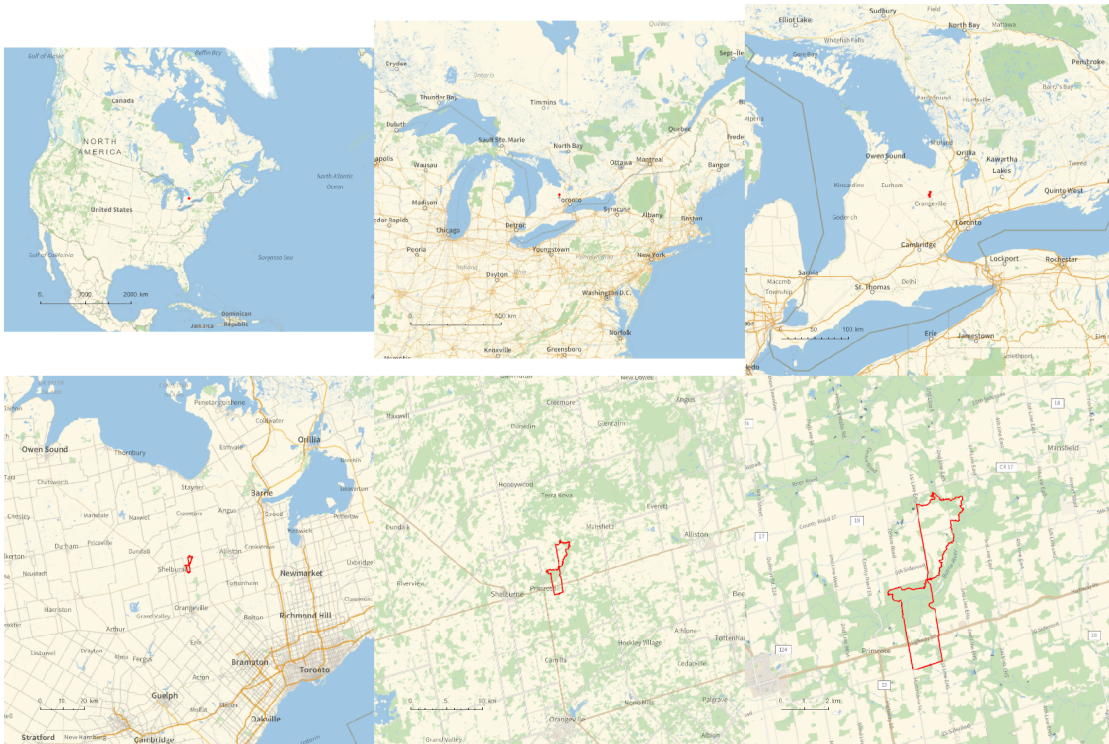
```
212
```

```
folder = "C:\\drorbn\\AcademicPensieve\\Album\\2023.04.15_Bruce_Hike_27-_Boyne_Valley";
SetDirectory[folder];
fs = Echo@FileNames["*.gpx"];
data = Union@Table["Geometry" /. Import[f, "Data"], {f, fs}];
path = Echo@GeoGraphics[{Red, data},
  GeoGridRangePadding → 0,
  GeoScaleBar → "Kilometers"
];
(*Export["path.png", path] *)
PathLocation = Module[{R = 3000, r = 8, n = 6, res = 600},
  ImageAssemble[
    Partition[#, 3] &@Table[
      Rasterize[
        GeoGraphics[{Red, Thick, data},
          GeoCenter → Mean@Cases[data, GeoPosition[l_List] :> Mean[l], ∞],
          GeoRange → Quantity[R (r / R)(k-1)/(n-1), "Kilometers"],
          GeoScaleBar → "Kilometers",
          ImageSize → res
        ],
      RasterSize → res
    ],
    {k, n}],
  "Fit", Background → White]
]
Export["PathLocation.png", PathLocation]
```

» {2023-04-15_10-33_Sat.gpx}



Out[] =



Out[*n*]=

PathLocation.png

```
folder = "C:\\drorbn\\AcademicPensieve\\Album\\2023.04.15_Bruce_Hike_27-_Boyne_Valley";
SetDirectory[folder];
(Interpretation[ImageResize[Import@#, 400], #] → "") & /@
FileNames["*.jpg" | "*.jpeg" | "*.png" | "*.mp4"]
```

```
{
  "TitleNotes" → "17.2km hike, plus 7.5km return by bike.",
  "ImageComments" → {}
}
```