

```

In[*]:= Length[DeleteFile /@ FileNames["index.html", "C:\\drorbn\\AcademicPensieve\\Album", 2]]
Out[*]=
202

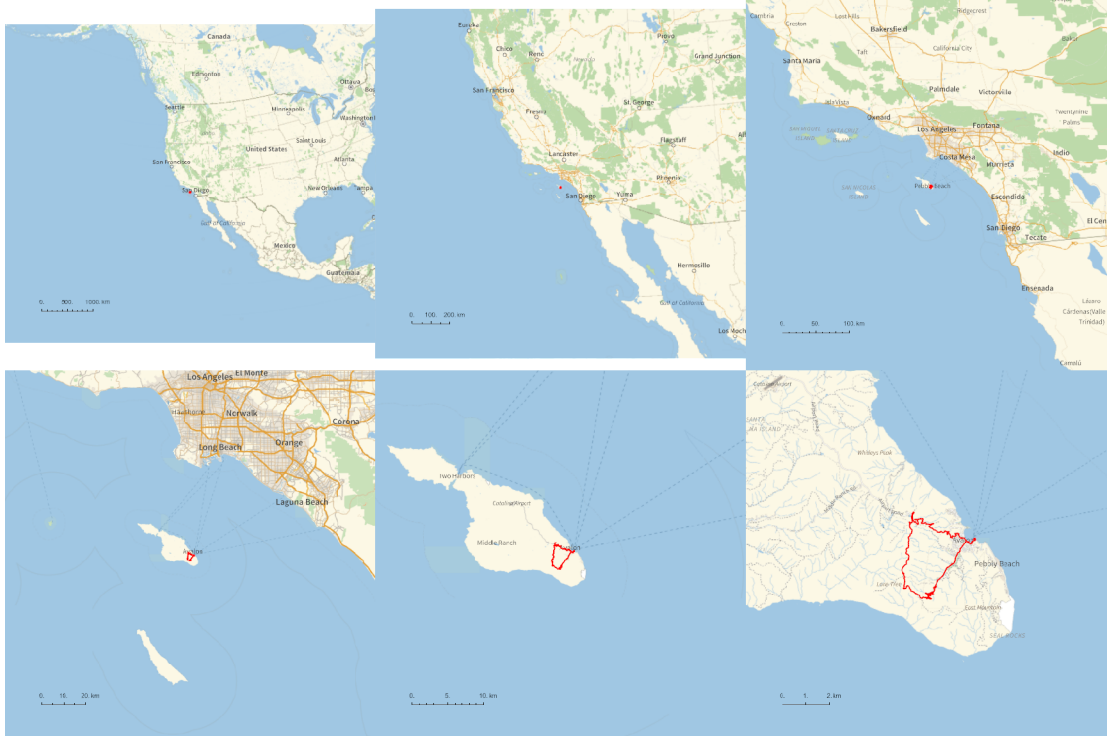
In[*]:= folder =
"C:\\drorbn\\AcademicPensieve\\Album\\2023.03.04_Santa_Catalina_Island_Excursion_and
_Hike";
SetDirectory[folder];
fs = Echo@FileNames["*.gpx"];
data = Union@Table["Geometry" /. Import[f, "Data"], {f, fs}];
path = Echo@GeoGraphics[{Red, data},
  GeoGridRangePadding → 0,
  GeoScaleBar → "Kilometers"
];
(*Export["path.png", path] *)
PathLocation = Module[{R = 3000, r = 8, n = 6, res = 600},
  ImageAssemble[
    Partition[#, 3] &@Table[
      Rasterize[
        GeoGraphics[{Red, Thick, data},
          GeoCenter → Mean@Cases[data, GeoPosition[L_List] :> Mean[L], ∞],
          GeoRange → Quantity[R (r / R)(k-1)/(n-1), "Kilometers"],
          GeoScaleBar → "Kilometers",
          ImageSize → res
        ],
        RasterSize → res
      ],
      {k, n}],
    "Fit", Background → White]
  ]
Export["PathLocation.png", PathLocation]

```

» {2023-03-04_11-11_Sat.gpx}



Out[]=



Out[]=

PathLocation.png

folder =

```
"C:\\drorbn\\AcademicPensieve\\Album\\2023.02.25_Urban_Walk_in_the_Beltline_Trail_and  
_Eglinton_Avenue";
```

SetDirectory[folder];

```
(Interpretation[ImageResize[Import@#, 400], #] → "") & /@
```

```
FileNames["*.jpg" | "*.jpeg" | "*.png" | "*.mp4"]
```

With Itai, about 17km.

```
{  
  "TitleNotes" → "With Itai, about 17km.",  
  "ImageComments" → {}  
}
```