

```

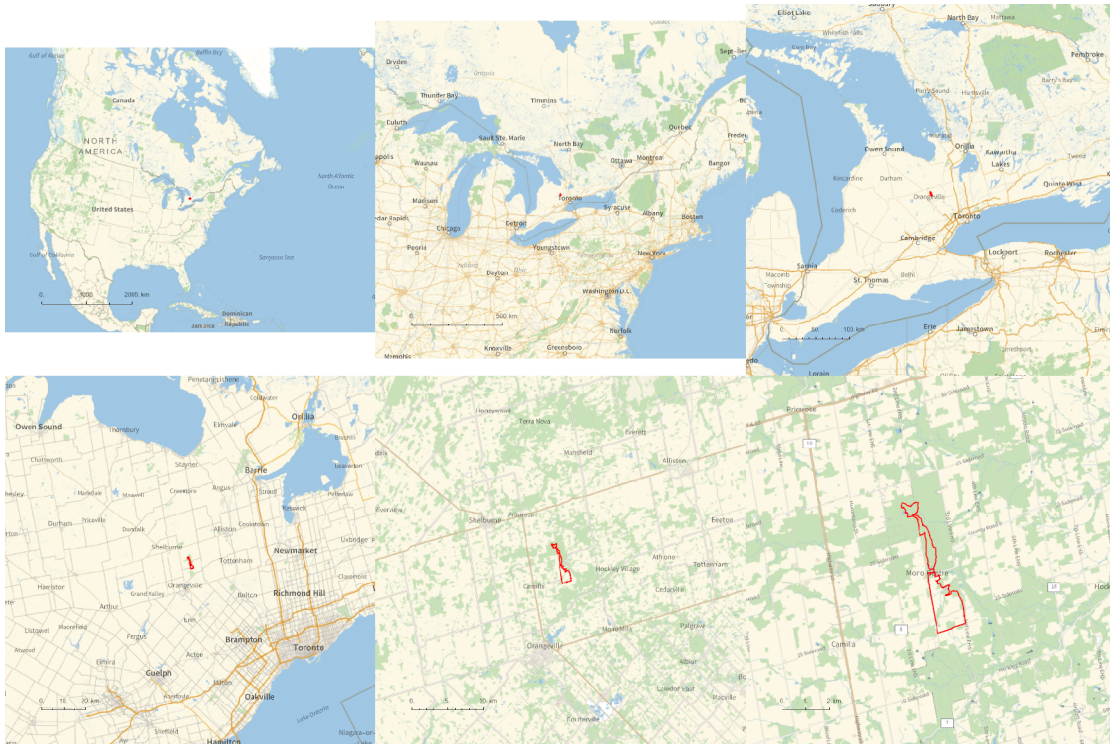
In[*]:= folder =
  "C:\\drorbn\\AcademicPensieve\\Album\\2022.12.10_Bruce_Hike_25- Mono_Cliffs_Provincial
    _Park";
SetDirectory[folder];
fs = Echo@FileNames["*.gpx"];
data = Union@Table["Geometry" /. Import[f, "Data"], {f, fs}];
path = Echo@GeoGraphics[{Red, data},
  GeoGridRangePadding → 0,
  GeoScaleBar → "Kilometers"
];
(*Export["path.png", path] *)
PathLocation = Module[{R = 3000, r = 8, n = 6, res = 600},
  ImageAssemble[
    Partition[#, 3] &@Table[
      Rasterize[
        GeoGraphics[{Red, Thick, data},
          GeoCenter → Mean@Cases[data, GeoPosition[l_List] :> Mean[l], ∞],
          GeoRange → Quantity[R (r / R)(k-1)/(n-1), "Kilometers"],
          GeoScaleBar → "Kilometers",
          ImageSize → res
        ],
        RasterSize → res
      ],
      {k, n}],
    "Fit", Background → White]
  ]
Export["PathLocation.png", PathLocation]

```

» {2022-12-10_10-04_Sat.gpx}



Out[]=



Out[*n*]=

PathLocation.png

```
{  
  "TitleNotes" → "With Itai, about 18.3km. We had no good way to return to the car, so we had to do  
  "ImageComments" → {}  
}
```