

```

In[*]:= folder =
  "C:\\drorbn\\AcademicPensieve\\Album\\2022.09.02_Afternoon_Hike_Near_Les_Diablerets";
SetDirectory[folder];
fs = Echo@FileNames["*.gpx"];
data = Union@Table["Geometry" /. Import[f, "Data"], {f, fs}];
path = Echo@GeoGraphics[{Red, data},
  GeoGridRangePadding → 0,
  GeoScaleBar → "Kilometers"
];
(*Export["path.png", path] *)
PathLocation = Module[{R = 3000, r = 4, n = 6, res = 600},
  ImageAssemble[
    Partition[#, 3] &@Table[
      Rasterize[
        GeoGraphics[{Red, Thick, data},
          GeoCenter → Mean@Cases[data, GeoPosition[L_List] :> Mean[L], ∞],
          GeoRange → Quantity[R (r / R)(k-1)/(n-1), "Kilometers"],
          GeoScaleBar → "Kilometers",
          ImageSize → res
        ],
        RasterSize → res
      ],
      {k, n}],
    "Fit", Background → White]
  ]
Export["PathLocation.png", PathLocation]
» {2022-09-02_13-30_Fri.gpx}

```

☹ Union: Heads List and GIS'DisjointBoxes at positions 2 and 1 are expected to be the same.

☹ Part: The expression

Union[GIS'DisjointBoxes[{{{74221.9, 545983.}, {74298.1, 546036.}}, {{74474.9, 545940.}, {74565., 545993.}}], Join[{}, \$Failed]], {}] cannot be used as a part specification.

☹ Part: The expression

Union[GIS'DisjointBoxes[{{{74221.9, 545983.}, {74298.1, 546036.}}, {{74474.9, 545940.}, {74565., 545993.}}], Join[{}, \$Failed]], {}] cannot be used as a part specification.

☹ Part: The expression

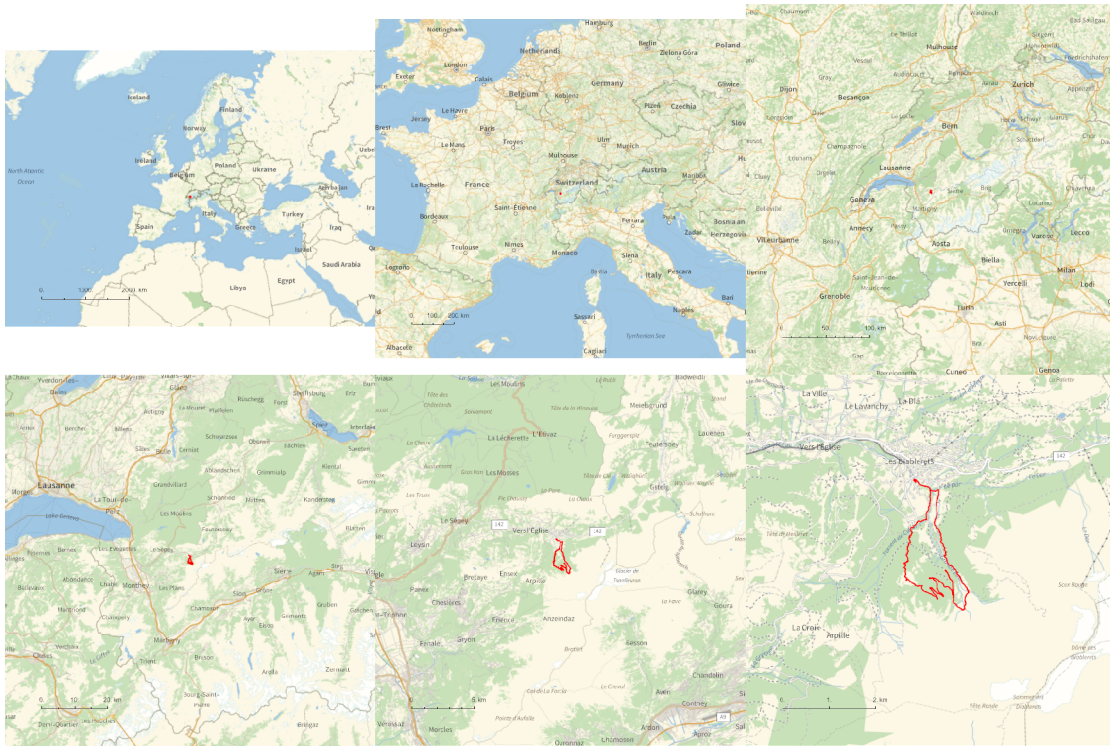
Union[GIS'DisjointBoxes[{{{74221.9, 545983.}, {74298.1, 546036.}}, {{74474.9, 545940.}, {74565., 545993.}}], Join[{}, \$Failed]], {}] cannot be used as a part specification.

☹ General: Further output of Part::pkspec1 will be suppressed during this calculation.

☹ Union: Heads List and GIS'DisjointBoxes at positions 2 and 1 are expected to be the same.

☹ Union: Heads List and GIS'DisjointBoxes at positions 2 and 1 are expected to be the same.

Out[]=



Out[]=

PathLocation.png

```
{
  "TitleNotes" → "I had a free afternoon after my talk. 12km, 900m elevation gain (and loss), and a
  "ImageComments" → {
    "P1190126.JPG" → "Shelter"
  }
}
```