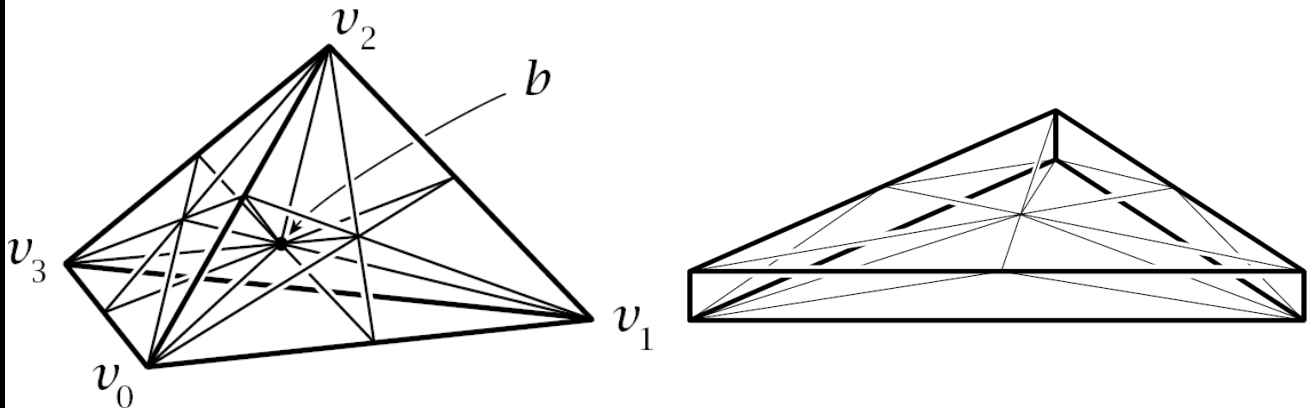


Wanted

by the Excision Authorities of Algebraic Topology



S

and

T

- Both map affine chains to affine chains with lesser support!
- Both commute with affine-linear transformations!
- S breaks any simplex of dimension n into a sum of simplices of diameter at most $n/(n+1)$ its original diameter!
- $\partial S = S\partial$ and $S - I = T\partial + \partial T$.

Image credits: Hatcher's book, <http://www.math.cornell.edu/~hatcher/AT/ATpage.html>.