

```

In[*]:= folder = "C:\\drorbn\\Album\\2024.03.29_Broadway_Walk";
SetDirectory[folder];

nbd = Select[FileNames["*", "C:\\drorbn\\Album"], FileType[#] == Directory &];
len = Length[nbd]
loc = Position[nbd, folder][[1, 1]];
DeleteFile[nbd[[Mod[#, len, 1]] <> "\\index.html"] & /@ (loc + {1, -1})];

fs = Echo@Take[FileNames[{"*.gpx", "*.kml"}], All];
data = Union@Table["Geometry" /. Import[f, "Data"], {f, fs}];
path = Echo@GeoGraphics[{Red, data},
  GeoGridRangePadding -> Scaled[0.1],
  GeoScaleBar -> "Kilometers"
];
Export["Path%.png", path]

path3D = Echo@ResourceFunction["GeoElevationGraphics3D"][{Red, data},
  GeoGridRangePadding -> 0,
  GeoScaleBar -> "Kilometers"
];
Export["Path3D%.png", path3D]

PathLocation = Module[{R = 3000, r = 15, n = 6, res = 600},
  ImageAssemble[
    Partition[#, 3] &@Table[
      Rasterize[
        GeoGraphics[{Red, Thick, data},
          GeoCenter -> Mean@Cases[data, GeoPosition[l_List] :-> Mean[l], ∞],
          GeoRange -> Quantity[R (r / R)^(k-1) / (n-1), "Kilometers"],
          GeoScaleBar -> "Kilometers",
          ImageSize -> res
        ],
        RasterSize -> res
      ],
      {k, n}],
    "Fit", Background -> White]
  ]
Export["PathLocation.png", PathLocation]

ResetDirectory[]

```

Out[\*]=

282

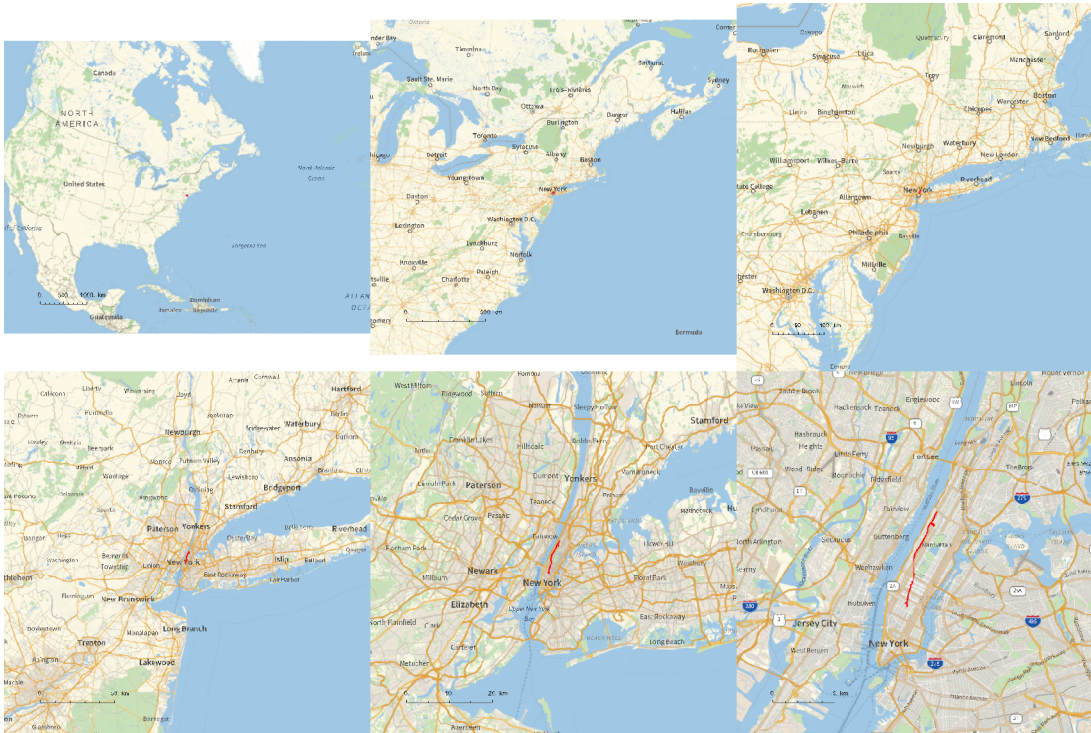
» {2024-03-29\_1488407341\_240329 Broadway Walk.gpx}



Out[ ]=

Path%.png

Out[ ]=



Out[\*]=

PathLocation.png

Out[\*]=

C:\Users\drorb\OneDrive\Documents

»

Out[\*]=

Path3D%.png

```
folder = "C:\\drorbn\\Album\\2024.03.29_Broadway_Walk";  
SetDirectory[folder];  
(Interpretation[ImageResize[Import@#, 400], #] → "") & /@  
FileNames["*.jpg" | "*.jpeg" | "*.png" | "*.mp4"]
```

About 10.7km.

```
{  
  "TitleNotes" → "About 10.7km.",  
  "ImageComments" → {}  
}
```