

```

In[*]:= folder = "C:\\drorbn\\Album\\2024.01.14_Crawford_Lake_and_Rattlesnake_Point_Hike";
SetDirectory[folder];

nbd = Select[FileNames["*", "C:\\drorbn\\Album"], FileType[#] == Directory &];
len = Length[nbd]
loc = Position[nbd, folder][[1, 1]];
DeleteFile[nbd[[Mod[#, len, 1]] <> "\\index.html"] & /@ (loc + {1, -1})];

fs = Echo@Take[FileNames["*.gpx"], All];
data = Union@Table["Geometry" /. Import[f, "Data"], {f, fs}];
path = Echo@GeoGraphics[{Red, data},
  GeoGridRangePadding -> Scaled[0.1],
  GeoScaleBar -> "Kilometers"
];
Export["Path%.png", path]

path3D = Echo@ResourceFunction["GeoElevationGraphics3D"][{Red, data},
  GeoGridRangePadding -> 0,
  GeoScaleBar -> "Kilometers"
];
Export["Path3D%.png", path3D]

PathLocation = Module[{R = 3000, r = 5, n = 6, res = 600},
  ImageAssemble[
    Partition[#, 3] &@Table[
      Rasterize[
        GeoGraphics[{Red, Thick, data},
          GeoCenter -> Mean@Cases[data, GeoPosition[l_List] :> Mean[l], ∞],
          GeoRange -> Quantity[R (r / R)^(k-1) / (n-1), "Kilometers"],
          GeoScaleBar -> "Kilometers",
          ImageSize -> res
        ],
      RasterSize -> res
    ],
    {k, n}],
  "Fit", Background -> White]
]
Export["PathLocation.png", PathLocation]

ResetDirectory[]

```

Out[*]=

265

 DeleteFile: Directory or file "C:\drorbn\Album\Admin\index.html" not found.

 DeleteFile: Directory or file "C:\drorbn\Album\2024.01.07_Winter_Walk_on_the_Toronto_Islands\index.html" not found.

» {2024-01-14_09-20_Sun.gpx}



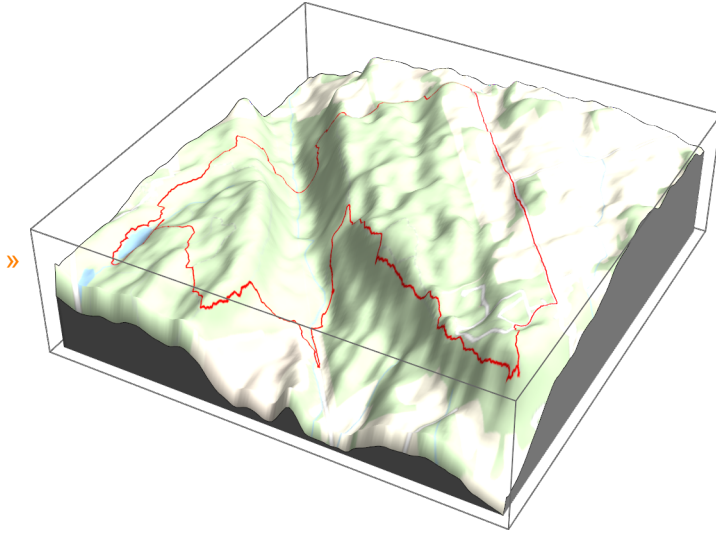
Out[*]=

Path%.png

- ☹ Union: Heads List and GIS`DisjointBoxes at positions 2 and 1 are expected to be the same.
- ☹ Part: The expression Union[GIS`DisjointBoxes[{{{ -795480., 481572.}, {-795443., 481625.}}], Join[{}, \$Failed]], {}] cannot be used as a part specification.
- ☹ Part: The expression Union[GIS`DisjointBoxes[{{{ -795480., 481572.}, {-795443., 481625.}}], Join[{}, \$Failed]], {}] cannot be used as a part specification.
- ☹ Part: The expression Union[GIS`DisjointBoxes[{{{ -795480., 481572.}, {-795443., 481625.}}], Join[{}, \$Failed]], {}] cannot be used as a part specification.
- ☹ General: Further output of Part::pkspec1 will be suppressed during this calculation.
- ☹ Union: Heads List and GIS`DisjointBoxes at positions 2 and 1 are expected to be the same.
- ☹ Union: Heads List and GIS`DisjointBoxSets at positions 2 and 1 are expected to be the same.
- ☹ General: Further output of Union::heads will be suppressed during this calculation.
- ☹ Extract: Position specification Union[GIS`DisjointBoxSets[{{<<1>>}, Join[{}, \$Failed, \$Failed, \$Failed]], {}] in Extract[{{<<1>>}, Union[GIS`DisjointBoxSets[{{<<1>>, <<1>>[<<1>>], GIS`LineBoxSet[250][GIS`BoxJoin[GIS`RotatedBox[<<3>>], GIS`RotatedBox[<<3>>], GIS`RotatedBox[<<3>>], GIS`RotatedBox[<<3>>], GIS`RotatedBox[<<3>>], GIS`RotatedBox[<<3>>], GIS`RotatedBox[<<3>>], GIS`RotatedBox[<<3>>], GIS`RotatedBox[<<3>>], <<4>>]], <<9>>, <<7>>]], <<1>>, <<1>>]] is not applicable.
- ☹ Extract: Position specification Union[GIS`DisjointBoxSets[{{<<1>>}, Join[{}, \$Failed, \$Failed, \$Failed]], {}] in Extract[{{GIS`LineBoxSet[250][GIS`BoxJoin[GIS`RotatedBox[{{<<2>>, <<2>>]], -0.728159, {-795268., 481167.}], GIS`RotatedBox[{{<<2>>, <<2>>]], -0.728159, {-795266., 481164.}], <<8>>, <<4>>]], GIS`BoxJoin[{{<<1>>}, GIS`BoxJoin[{{<<1>>}], <<1>>]], GIS`LineBoxSet[250][<<1>>]], <<1>>]] is not applicable.

☹ **Extract:** Position specification Union[GIS`DisjointBoxSets[{{1}}, Join[{}], \$Failed, \$Failed, \$Failed]], {}] in
 Extract[{{1}}, Union[GIS`DisjointBoxSets[{{1}}, {{1}}, GIS`LineBoxSet[250][GIS`BoxJoin[GIS`RotatedBox[{{3}},
 GIS`RotatedBox[{{3}}, GIS`RotatedBox[{{3}}, GIS`RotatedBox[{{3}}, GIS`RotatedBox[{{3}}, GIS`RotatedBox[{{3}},
 GIS`RotatedBox[{{3}}, GIS`RotatedBox[{{3}}, GIS`RotatedBox[{{3}}, GIS`RotatedBox[{{3}}, {{4}},
 {{9}}, {{7}}]], Join[{{1}}, {{1}}]] is not applicable.

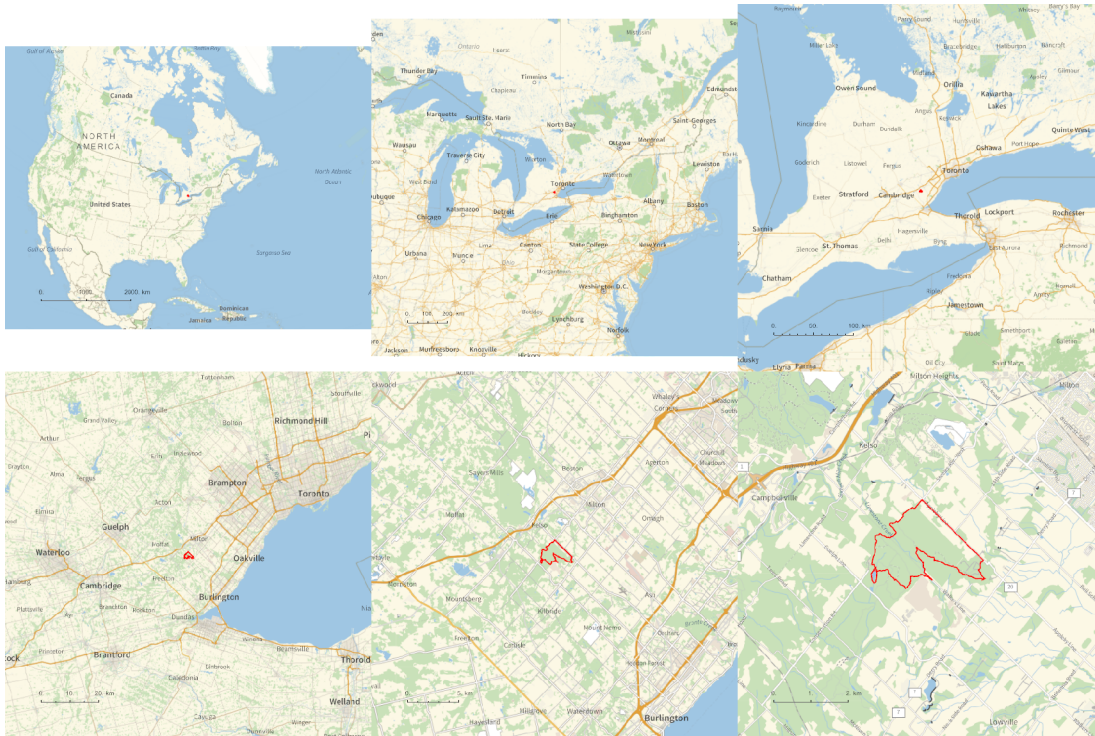
☹ **General:** Further output of Extract::ps1 will be suppressed during this calculation.



Out[]=

Path3D%.png

Out[]=



Out[*n*]=

PathLocation.png

Out[*n*]=

C:\Users\drorb\Documents

```
folder = "C:\\drorbn\\Album\\2024.01.14_Crawford_Lake_and_Rattlesnake_Point_Hike";
```

```
SetDirectory[folder];
```

```
(Interpretation[ImageResize[Import@#, 400], #] → "") & /@
```

```
FileNames["*.jpg" | "*.jpeg" | "*.png" | "*.mp4"]
```

About 13km on ice and snow. Partially overlaps with [Bruce Hike 16](../2021.06.20_Bruce_Hike_16-Kilbride-to_the_Source_of_Steeles/index.html").

```
{
  "TitleNotes" → "About 13km on ice and snow. Partially overlaps with <a
    href=../2021.06.20_Bruce_Hike_16-Kilbride_to_the_Source_of_Steeles/index.html
    >Bruce Hike 16</a>.",
  "ImageComments" → {}
}
```